

ALL ST. ST. TEST GAUGE 0.25% ACC EXPRESS 100



Designed to be used in laboratory for tests or calibrations and on all the plants where reliability and accuracy are important. Each instrument is supplied with internal calibration certificate. On request, the instrument may be supplied with calibration certificate issued by external calibration centre.



PED 97/23/CE
ATEX 94/9/CE



GOST R PATTERN
APPROVAL

ATEX and GOST R PATTERN approvals available under our **PCI TEMA** brand.

TECHNICAL CHARACTERISTICS

Diameters: 150 mm
Case and ring: st. st. 304, bayonet type ring
Protection degree : IP55 (EN60529/IEC529)
Transparent: glass, thickness 4mm, gasket in neoprene
Movement: st. st., reinforced
Dial: aluminium with mirror band , black numerals on light green background
Pointer: micrometric adjustable with knife edge
Blow out: neoprene, upper
Sensing element: Bourdon tube type, with "C" form for pressure ≤ 60 bar, helical wound for pressure ≥ 60 bar
Element material : AISI 316L (as option in Beryllium copper)
Process connection material : AISI 316L
Welding: T.I.G.
Connection dimension: ½"NPTM or BSP
Mounting:
 type A bottom connection, direct mounting
 type B panel mounting, clamp fixing, back connection
 type D back connection, direct mounting
 type E panel mounting, back connection
Ranges: see table at page 2
Operating range limit : 75% of full scale
Overpressure: +15% F.S. for range up to 60bar
Accuracy: class 0,25, acc. to EN837 at 20°C
Ambient temperature limit: 0/+60°C
Fluid temperature limit:
 -30/+120°C element in st.st.316L
 -30/+230°C element in MONEL
Temperature error: 0,005%/°C in range 0/60°C
Internal calibration : with dead weight tester
Construction acc. to ATEX directive 94/9/EC , gr.II cat. 2GDc (on request)
Construction according to PED directive 97/23/EC (on request)

OPTIONS AND ACCESSORIES

- Carrying case
- Case in AISI316
- ANCC valve
- Scale in kg/cm²
- Safety glass window
- SOLID FRONT Version

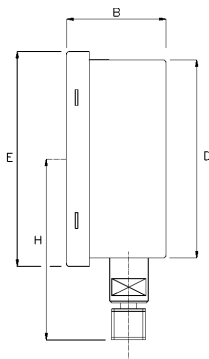
HOW TO ORDER

Please specify: model, mounting, case diameter, range, connection, options if any
Example : EP100, A,150mm, 0/25 bar, ½"NPTM

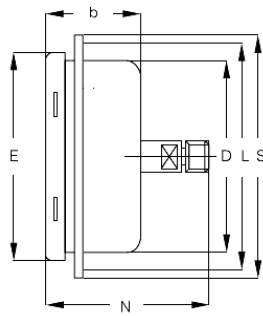
RANGES

Pressure															
Bar	0/1	0/1,6	0/2,5	0/4	0/6	0/10	0/16	0/25	0/40	0/60	0/100	0/160	0/250	0/400	0/600
Graduation	0,005	0,005	0,01	0,02	0,02	0,05	0,06	0,1	0,2	0,2	0,5	0,5	1	2	2
Interval	0,1	0,1	0,2	0,2	0,5	1	1	2	2	5	10	10	20	20	50

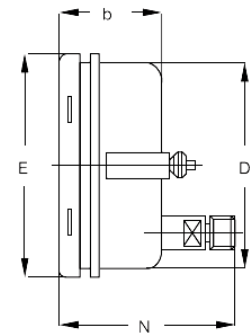
Vacuum and compound	
Bar	-1/0
Graduation	0,005
Interval	0,1



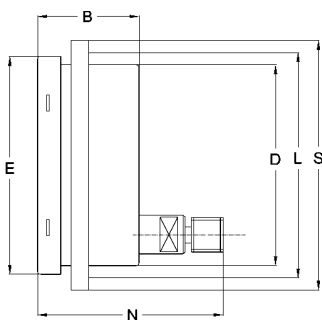
Type A: Direct mounting, radial connection



Type D: Panel mounting, 3 hole front flange, rear central connection



Type B: Panel mounting, "U" type rear bracket, rear eccentric connection



Type E: Panel mounting, 3 hole front flange, rear eccentric connection

TYPE	DS	B	D	E	H	N	L	S
A	150	57	150	166	125	-	-	-
E	150	57	150	166	-	89	175	190
C	150	57	150	166	-	89	175	190
B	150	57	150	166	-	89	-	-