

ALL ST/ST DIFFERENTIAL PRESSURE GAUGE, DOUBLE BOURDON TUBE TYPE BIPRESS 100



The differential pressure gauges series BP100, are suitable to be installed in the presence of low static pressure on chemical, petrochemical plants, onshore and offshore applications, machinery, food processing and in the pharmaceutical industry.



PED 97/23/CE
ATEX 94/9/CE



GOST R PATTERN
APPROVAL

ATEX and GOST R PATTERN approvals available under our **PCI TEMA** brand.

TECHNICAL CHARACTERISTICS

Diameters: 100 mm
Case and ring: st. st. 304, bayonet type ring
Protection degree: IP55 (EN60529/IEC529)
Transparent: glass, thickness 4mm, gasket in neoprene
Movement: st. st., reinforced
Dial: aluminium with black numerals on white background
Pointer: Aluminium, black painted, micrometric adjustable
Blow out: EPDM, upper
Sensing element: Bourdon tube type, with "C" form
Element material: st. st. 316L
Process connection material: AISI 316
Welding: T.I.G.
Connection dimension: 1/4" NPTM
Mounting:
 type A bottom connection, direct, direct mounting
 type C surface mounting, bottom connection
 type F panel mounting, bottom connection
Ranges: see table at page 2
Accuracy: class 1,6 acc. to EN837
Scale amplitude : 270°
Ambient temperature limit: -25/+65°C
Fluid temperature limit: max 100°C
Temperature error: 0,08%/°C in range 10/30°C
Construction acc. to ATEX directive 94/9/EC, gr.II cat. 2GDc (on request)

OPTIONS AND ACCESSORIES

- Accuracy 0,5%
- Scale 0/16bar or 0/25bar
- Safety glass type thickness .4 mm
- Glycerine filling for T.amb.-25/+60°C
- Silicon oil filling for T.amb.-40/+60°C
- Filling with fluorinated oil suitable for use on Oxygen and for ambient temperature -60/+60°C
- Mounting with diaphragm seals remotely

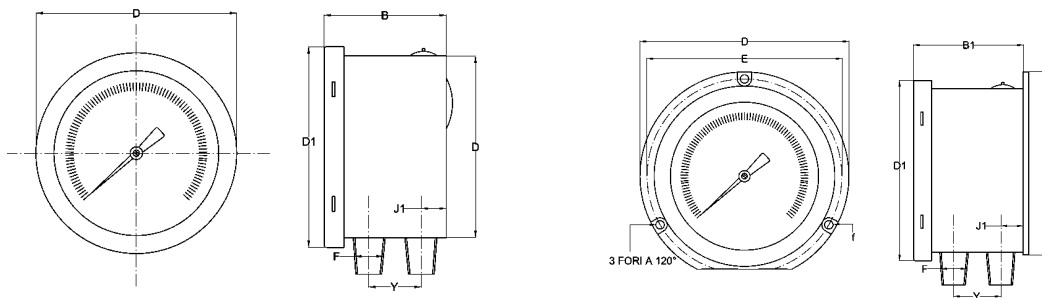
HOW TO ORDER

Please specify: model, mounting, range, connection, options if any

Example : BP100, C, 0/2,5bar, 2x1/2"NPTM

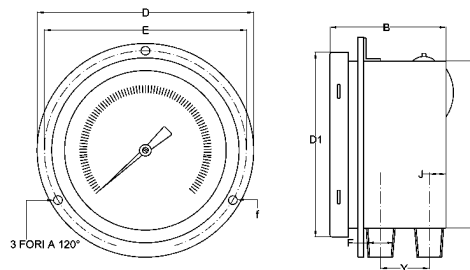
RANGES

Differential pressure	bar	0/0,4	0/0,6	0/1	0/1,6	0/2,5	0/4	0/6	0/10
Static pressure on both side or only on side "+"	bar	0,72	1,6	4	8	12,5	16	24	40
Static pressure on side "-"	bar	0,6	1	1,6	2	3	5	10	16



Type A: Direct mounting, radial connections

Type C: Wall mounting with rear flange, radial connections



Type F: Panel mounting, 3 hole front flange radial connections

Diameter	f	b	b1	E	D	f	j	j1	y	Weight kg
100	1/4" NPTM	87	88	120	132	5	16	16	32	1